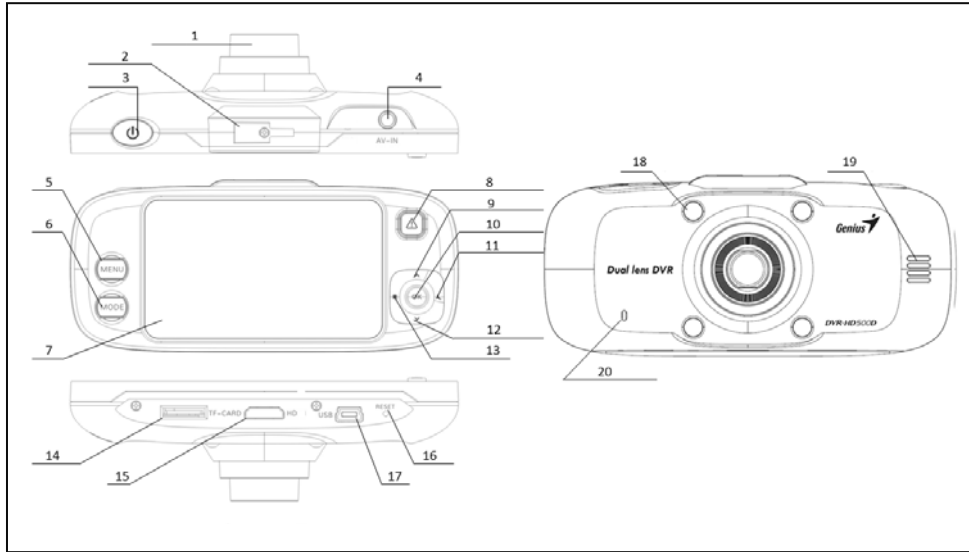


DVR-HD500D Car Recorder Main Function



1	Lens	6	Mode	11	Right/Night Mode	16	Reset
2	Tenon joint	7	Panel	12	Down/Switch camera view	17	USB
3	Power	8	Emergency Save	13	Left/Day Mode	18	USB
4	AV in	9	Up/Switch camera view	14	Micro SD	19	Horn
5	Menu	10	OK/Photograph	15	HD	20	Microphone

Button Functions for Camera View:

Press Up and Down buttons to change the front or rear camera view on the LCD display.

Down Button: Use this button to alternate between the front and rear camera view on the LCD display.

1. Full front camera view.
2. Full rear camera view.

Up Button: Press in sequence up to four times to show front and rear camera views on the LCD display.

1. Full front camera view.
2. Front camera view (main) and rear camera view (inset).
3. Rear camera view (main) and front camera view (inset).
4. Full rear camera view.

System Requirements

To download photos and videos to your PC, you need the following minimum configuration:

- Pentium 4 Processor (or above), 2.6GHz, with Windows XP or 7 Service Pack 2
- 1GB RAM or Higher.200MB free disk space
- Available USB Interface
- Recommended screen resolution 1024 X 768 pixels or higher

Using the Car Recorder

Installing Micro SD card

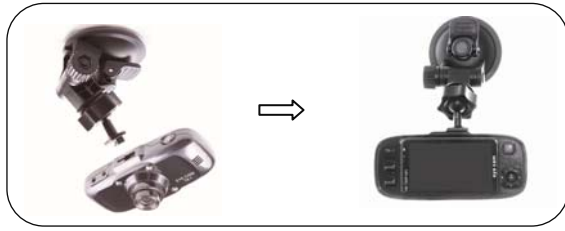
1. Insert the MicroSD card to the SD slot.

**Notes:**

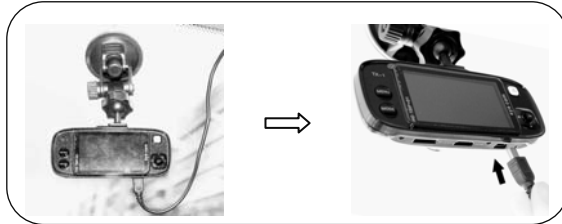
1. The Car Recorder does not include internal memory so you need to format the SD card after you have inserted it into the SD slot the first time.
2. Min. requirement of MicroSD card must be 1GB Class 4 above.

How to install Car Bracket

1. Connect the car recorder to the camera bracket by slightly twisting the tenon to the right.



2. Focus the lens to the front, then attach the bracket suction to the windshield.
3. Secure the bracket suction firmly and adjust the angle view to record.

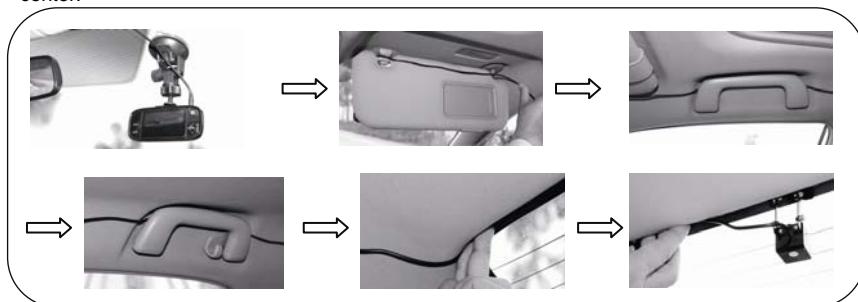


4. Connect the car recorder adaptor to the cigarette lighter and connect the other end to the USB connector on the car recorder.






Installing the rear camera

1. After you have installed the HD-500D DVR and mounting bracket on the front windshield, you can plug the AV cable into the connector.
2. We suggest you run the AV signal cable from the sun visor along the ceiling to the rear window.
3. Remove the sticker from the rear view camera and place it on the rear window near the bottom in the center.

**Notes:**

Make sure the sticker on the rear window does not interfere with or blur the rear camera view.

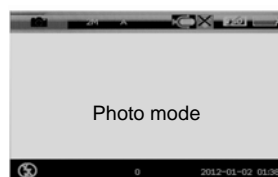
Menu Set Up

1. After you have connected the car recorder adaptor to the cigarette lighter, and your MicroSD has been formatted correctly, the car recorder will start to record automatically.
2. If it records successfully, the blue LED light glow continuously and this icon  will appear in the upper left corner of the screen.
3. Press OK button to stop recording (in Recording mode, some buttons can't be used).
4. Press mode button to enter Photo mode. Then the Photo mode  icon will appear in the upper left corner of the LCD monitor. (DVR-HD500D includes three modes, Recording, Photo, and Playback.)
5. Press OK button to take photos.
6. Press Mode button again to enter Playback mode. Then the playback icon  will appear in the upper left of the LCD monitor.

You can press OK to play photos or video files.

In Playback mode:

- a. Press OK for play and pause function.
- b. Push OK, then Up button to browse the previous file.
- c. Push OK, the Down button to look at the next file.



 **Notes:**

1. If you want to use the car recorder outside of the car, just detach it from the suction bracket, and hold it with two hands aiming at the target when recording or taking photos.
2. Do not remove the MicroSD card when using the car recorder (the files will be lost).

MENU

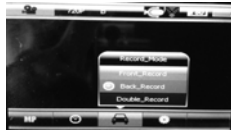
1. Press MENU button to switch to setup mode.
2. Push OK button, then LEFT/RIGHT/UP/DOWN buttons for different function settings, then press OK to confirm it. In Setup mode, you can choose Resolution, Recording Time, Recording Mode, and System Setting for further function settings.



Mega Pixel: Choose Resolution



Recording Time: Choose Recording Interval Time



Recording Mode: Choose Camera for Recording



Setting: for System setting



Note:

We recommend you back up your files in the MicroSD card in advance as the car recorder will record automatically.

Download files

Connect the car recorder to the PC by using the USB cable and select USB Disk, then download the videos or photos from the MicroSD card.

